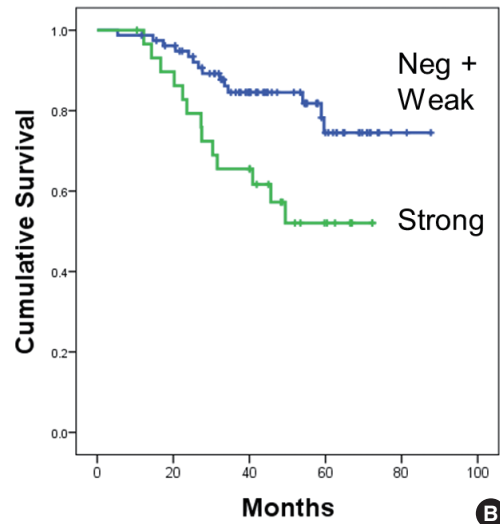
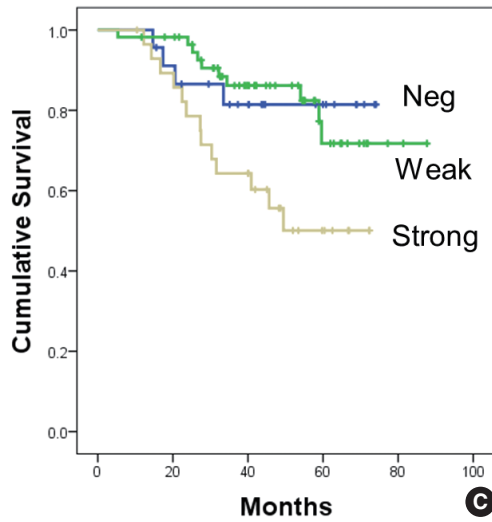


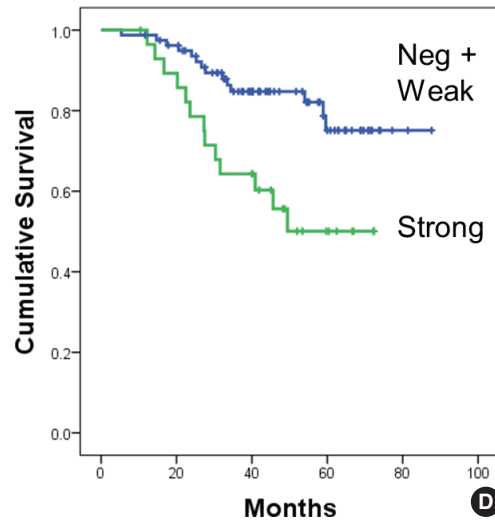
A



B



C



D

Supplementary Fig. S1. Kaplan-Meier survival curves of cumulative survival rate versus follow-up months after surgery according to immunohistochemistry results at 20% (A, B) and 30% cut-offs (C, D). (A, C) Strong (beige) versus weak (green) versus negative expression (blue) ($p = .031$ and $p = .017$, respectively). (B, D) Strong (green) versus combined weak and negative expression (Neg + Weak, blue) ($p = .008$ and $p = .004$, respectively).