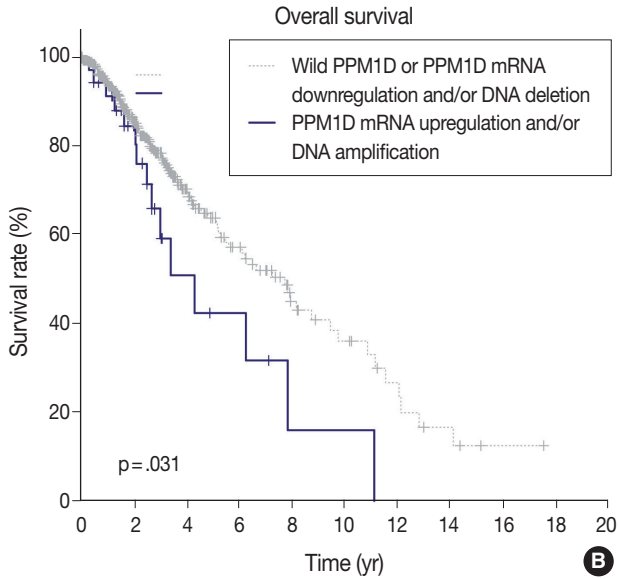
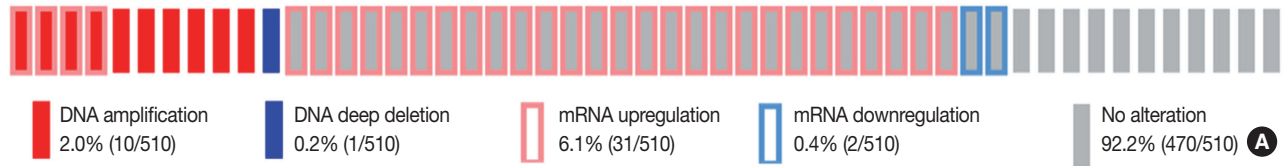


PPM1D genetic alterations in the supratentorial gliomas from TCGA data (n=510)



**Supplementary Fig. S1.** Genetic alteration status of protein phosphatase magnesium-dependent 1 $\delta$  (PPM1D) in lower grade supratentorial gliomas from The Cancer Genome Atlas (TCGA) data. Genetic alterations were detected in 7.8% of cases (40/510) (A). Overall survival of patients with tumors with up-regulated PPM1D transcripts and/or DNA amplification versus downregulated/ DNA deep deletion/no alteration. Overall survival is worse in cases with PPM1D mRNA upregulation and/or DNA amplification (log-rank test; p = .031) (B).