

Guideline Recommendations for Testing of *ALK* Gene Rearrangement in Lung Cancer: A Proposal of the Korean Cardiopulmonary Pathology Study Group

Hyojin Kim · Hyo Sup Shim¹
Lucia Kim² · Tae-Jung Kim³
Kun Young Kwon⁴
Geon Kook Lee⁵ · Jin-Haeng Chung
Korean Cardiopulmonary Pathology
Study Group

Department of Pathology, Seoul National University Bundang Hospital, Seoul National University College of Medicine, Seongnam;
¹Department of Pathology, Yonsei University College of Medicine, Seoul; ²Department of Pathology, Inha University School of Medicine, Incheon; ³Department of Pathology, The Catholic University of Korea College of Medicine, Seoul; ⁴Department of Pathology, Keimyung University Dongsan Medical Center, Daegu; ⁵Department of Pathology, National Cancer Center, Goyang, Korea

Received: January 21, 2014
Accepted: January 27, 2014

Corresponding Authors

Jin-Haeng Chung, M.D.
Department of Pathology, Seoul National University Bundang Hospital, 82 Gumi-ro 173beon-gil, Bundang-gu, Seongnam 463-707, Korea
Tel: +82-31-787-7713
Fax: +82-31-787-4012
E-mail: chungjh@snu.ac.kr

Geon Kook Lee, M.D.
Department of Pathology, National Cancer Center, 323 Ilsan-ro, Ilsandong-gu, Goyang 410-769, Korea
Tel: +82-31-920-1746
Fax: +82-31-920-1369
E-mail: gklee@ncc.re.kr

Rearrangement of anaplastic lymphoma kinase (*ALK*) gene is the best predictor of response to crizotinib, an *ALK* tyrosine kinase inhibitor. However, the prevalence of the *ALK* fusion is low, so accurate patient identification is crucial for successful treatment using *ALK* inhibitors. Furthermore, most patients with lung cancer present with advanced-stage disease at the time of diagnosis, so it is important for pathologists to detect *ALK*-rearranged patients while effectively maximizing small biopsy or cytology specimens. In this review, we propose a guideline recommendation for *ALK* testing approved by the Cardiopulmonary Pathology Study Group of the Korean Society of Pathologists.

Key Words: Anaplastic lymphoma kinase; Gene rearrangement; Lung neoplasms; Guideline

Lung cancer remains the leading cause of cancer-related death throughout the world.¹ Fortunately, outstanding development in cancer genomics and molecular targeted therapy has allowed targeted therapy that includes treatment optimization based on

molecular testing and target mutation, especially in adenocarcinoma. Specifically, the great success of the epidermal growth factor receptor (*EGFR*) tyrosine kinase inhibitors (*TKIs*) following the discovery of somatic *EGFR* gene mutation has raised

hope that a targeted therapy will improve survival and quality of life for lung cancer patients.²⁻⁴ In this context, genetic analyses of various molecular markers in tumor tissue have become standard laboratory tests for the clinical management of lung cancers.

In 2007, the anaplastic lymphoma kinase (*ALK*) gene rearrangement creating an in-frame fusion protein between echinoderm microtubule-associated protein-like 4 (*EML4*) and *ALK* was described in non-small cell lung carcinoma (NSCLC) by Soda *et al.*⁵ The presence of *ALK* gene rearrangement in lung adenocarcinomas is the best predictor of response to crizotinib, an *ALK* tyrosine kinase inhibitor.⁶⁻⁸ The Food and Drug Administration (FDA) approved crizotinib with a companion diagnostic fluorescence *in situ* hybridization (FISH) test (Vysis, Abbott Molecular Inc., Des Plaines, IL, USA) for *ALK*-rearranged NSCLC. However, the prevalence of the *ALK* fusion is low, at around 5% in various previous studies.^{6,8-13} Thus, accurate patient identification is crucial for successful treatment using the *ALK* inhibitor and the proposal of a standard guideline suitable for the Korean medical community is also needed.

Herein, we reviewed several publications related with consensus opinions and recommendations for molecular testing in lung cancer, including *ALK* testing, and propose a guideline recommendation for *ALK* testing approved by the Cardiopulmonary Pathology Study Group of the Korean Society of Pathologists (Table 1).

PATIENT ELIGIBILITY

Clinical characteristics associated with the *ALK* gene rearrangement are known to be adenocarcinoma histology, never/light smoking history, and younger age.^{6,13-15} However, not all *ALK*-rearranged patients demonstrate these characteristics. *ALK* fusion has also been detected in older patients (over 70 years old) with a smoking history, and in patients with squamous cell carcinoma.^{12,16} Therefore, clinical characteristics alone are not the determinant of *ALK* testing. Guidelines from the College of American Pathologists (CAP), the International Association for the Study of Lung Cancer (IASLC), and the Association for Molecular Pathology (AMP) also state that clinical characteristics (age, sex, ethnicity, smoking history, etc.) are not sufficiently sensitive or specific to be used to select or exclude patients for treatment or testing for *ALK* gene rearrangement.¹⁷

Recent published guidelines recommend histological type as the most important factor for determining whether *ALK* testing should be performed. Patients who are diagnosed with adenocarcinoma, large cell carcinoma, or non-small cell carcinoma with an adenocarcinoma component are recommended for *ALK* testing.^{17,18} Thus, accurate histological diagnosis is the first step for molecular testing. Pathologists should try to further classify poorly differentiated NSCLCs into more specific types using immunohistochemistry (IHC), such as thyroid transcription factor-1, napsin A, p63, p40, and cytokeratin5/6.¹⁹⁻²⁴ There have been a few reports about squamous cell carcinoma harboring *ALK* gene rearrangement, but the frequency is very low.^{6,16}

Table 1. Summary of *ALK* testing guideline recommendations

	Recommendation
Patient eligibility	Histologic type is the most important factor: patients diagnosed with adenocarcinoma, large cell carcinoma or non-small cell carcinoma with adenocarcinoma component should be tested for <i>ALK</i> rearrangement. Clinical criteria might be considered, when adenocarcinoma component cannot be completely excluded.
Specimen type	Histological and cytological specimens are both acceptable. Either primary tumors or metastatic lesions are equally suitable. In cases with multiple, synchronous primary lung adenocarcinomas, each tumor may be tested.
Sample selection	A minimum of 50-100 assessable tumor cells are required for <i>ALK</i> FISH test. <i>ALK</i> IHC can be performed as long as there are at least a few clusters of viable tumor cells.
Sample processing	Fixative: 10% neutral-buffered formalin, immediately after the sample is removed from the patient. Fixation time: from 6 to 48 hours. Avoid decalcified tissue. Routine preparation for cytology is acceptable, if fully validated.
Diagnostic method	FISH is a companion diagnostic test for detection of <i>ALK</i> rearrangement. IHC can be a potential screening method with high sensitive detection method. RT-PCR is highly sensitive but not recommended as a first-line diagnostic method for determining <i>ALK</i> fusion status. The pathologist should consider the pros and cons of each method and combination of more than one technique may be useful in equivocal cases.
Reporting format	Patients and sample information, type of detection method, results of the test, comments.

ALK, anaplastic lymphoma kinase; FISH, fluorescence *in situ* hybridization; IHC, immunohistochemistry; RT-PCR, reverse transcriptase-polymerase chain reaction.

Thus, the CAP-IASLC-AMP guideline does not recommend ALK testing in lung cancer cases without any adenocarcinoma component, such as pure squamous cell carcinomas, pure small cell carcinomas, or large cell carcinomas lacking any IHC evidence of adenocarcinoma differentiation.¹⁷

Actually, about two-thirds of lung cancer patients present with advanced stage at the time of diagnosis, and small biopsies or cytology specimens are the only available samples for diagnosis and molecular testing. In these cases, histological sub-typing may not be always feasible, the biopsy or cytology specimens may not be representative of the whole tumor, and any adenocarcinoma component cannot be completely excluded. For these cases, ALK testing is recommended and the clinical features, such as young age and/or lack of smoking history, may be used to select patients for testing.¹⁷

SPECIMEN TYPE AND PROCESSING FOR ALK TESTING

Specimen type

Various biopsy specimens obtained by different techniques including endoscopic biopsies, core-needle biopsies, biopsies guided by endobronchial ultrasound (EBUS) or endoscopic esophageal ultrasound, mediastinoscopy, and thoracotomy can be used for ALK testing. Recent studies have shown that cytology specimens are suitable for ALK testing, and that the results are highly concordant with those of corresponding histological specimens, thus cytology specimens such as EBUS-guided fine-needle aspiration (FNA), transthoracic FNA, bronchial secretions or brushes, bronchoalveolar lavages, and pleural effusions can be used for ALK testing.²⁵⁻²⁸ Thus, both histological and cytological specimens are acceptable for ALK testing, if appropriately processed and validated.

Tumor tissues from either primary tumors or metastatic lesions are equally suitable for ALK testing according to biopsy accessibility. Although discordance in *ALK* status between primary and metastatic disease has been reported,²⁹ data are insufficient regarding which one is better for ALK testing.¹⁷ For patients with multiple, synchronous primary lung adenocarcinomas, each tumor may be tested. However, testing of multiple different areas within a single tumor is not necessary, because heterogeneity of *ALK* gene status does not seem to be related to the presence of a different histological pattern or biology, but is more likely due to technical problems.¹⁷

Sample selection

A sufficient number of tumor cells are crucial for successful molecular testing. The number of tumor cells required for IHC assessment of ALK protein remains undefined, as IHC can be performed as long as there are at least a few clusters of viable tumor cells. Regarding *ALK* FISH, a minimum of 50 to 100 assessable tumor cells are required. Unlike *EGFR* mutation testing, cells are analyzed individually, so tumor percentage is not as critical. However, it is necessary to choose slides or regions of slides in which the tumor cells do not overlap, and to distinguish them from the adjacent non-neoplastic cells. If the tumor component is very focal within the sample, it is recommended that the area examined be marked on the slide so that it may be readily identifiable under a dark field fluorescence microscope. In this step, the pathologist has the responsibility to determine if the selected sample contains a sufficient number and quality of tumor cells to ensure the quality of the analysis.

Sample processing

Formalin-fixed, paraffin-embedded (FFPE) tissues are routinely used for molecular testing. The diagnostic kits for ALK testing were developed and validated only on FFPE histological samples.¹⁸ The first and most important step in tissue processing is immediate fixation, preferably within one hour after the sample is removed from the patient.^{30,31} It is widely recognized that 10% neutral-buffered formalin is ideal for preparing FFPE samples, whereas the optimal fixation time ranges from six to 48 hours.^{18,31-33} Specimens treated with decalcifying solution (e.g., bone biopsy) are usually suboptimal for molecular studies, because the solution may interfere with IHC and can frequently compromise FISH testing, so the reliability of molecular testing is reduced.

Regarding cytological specimens, most sample types, including conventional smears, cytospins, or liquid-based preparations (e.g., ThinPrep, Hologic, or SurePath, BD Diagnostics) regardless of fixation type (air-dried and alcohol-based fixatives) can be used for ALK testing. Cytology specimens should be fixed immediately by the usual alcohol-based methods. For FISH analysis, the use of adhesive-coated or positively charged slides in lung cytology is recommended, as these slides improve the adherence of the cells. FISH works equally well on unstained specimens as well as those processed with Papanicolaou, hematoxylin, or a modified Giemsa stain, and a separate procedure is not usually required. However, in case of a modified Giemsa stain, de-staining with an acid-alcohol technique is recommended before FISH analysis.²⁵ Cell blocks are regarded as appropriate for

molecular testing and can be handled in the same way as histological FFPE specimens.

DIAGNOSTIC METHODS FOR *ALK* GENE REARRANGEMENT

Several methods are currently available to assess *ALK* gene rearrangement, including FISH, IHC, and reverse transcriptase-polymerase chain reaction (RT-PCR).

Fluorescence *in situ* hybridization

FISH is currently the standard method to detect *ALK* rearrangements because it was used previously in clinical trials, and is the only test correlated with clinical response. The FDA has approved crizotinib with a companion diagnostic FISH test for *ALK*-rearranged NSCLC using the certified commercial kit, Abbott Vysis (*ALK* Break Apart FISH Probe Kit, Abbott Molecular Inc.). The kit includes red (3') and green (5')-colored break-apart probes, which overlap in a fused signal without *ALK* gene rearrangement (Fig. 1A). Although the break-apart FISH assay requires experience for interpretation, patience, high cost, and technical expertise, this assay is highly sensitive and specific for the detection of *ALK* gene rearrangement regardless of *ALK* fusion partners.

Interpretation should be performed in areas of the slide with good signal, in which at least 50% of all nuclei are easily analyzable, with minimal background or nuclear fluorescent "noise." Areas where the borders of individual nuclei are not clearly identifiable and/or high cell density causes excessive nuclear overlap are easily misinterpreted, and should be avoided. Crite-

ria that must be met for a break-apart FISH assay to be considered positive for *ALK* rearrangement include: at least 50 cells counted and at least 15% of the counted cells demonstrating separated green and red signals by at least two signal diameters (Fig. 1B), and/or an isolated red signal (Fig. 1C).³⁴ There have been several reports in which a few cases showed "borderline" *ALK* FISH positivity that approached the 15% cutoff point or less than two signal diameter distances. These cases were regarded as negative with the current criteria and suggest alternative *ALK* diagnostic techniques and/or an assessment of their response to *ALK* inhibitors would be required. There are also rare instances when FISH showed atypical signal patterns, such as for an isolated 5' signal that does not fulfill current positive criteria. Such unusual patterns require confirmation of *ALK* status using a different secondary assay or examination of the effects of crizotinib therapy.

Immunohistochemistry

ALK protein represents a potential marker for indicating *ALK* gene rearrangement, and immunohistochemical detection of *ALK* protein can be a rapid screening method with low cost for detection of *ALK*-rearranged NSCLC. When the *ALK*1 antibody, which has been used for the diagnosis of anaplastic large cell lymphoma (ALCL) is applied, detection of *ALK* protein in NSCLCs is difficult because the protein expression level is usually lower in NSCLCs than in ALCL.³⁵ Therefore, several factors including antigen retrieval, primary antibodies with high affinity and sufficient concentration, incubation time and temperature, and strong amplification of the signal should be applied to improve the sensitivity of *ALK* IHC. There are three *ALK* antibod-

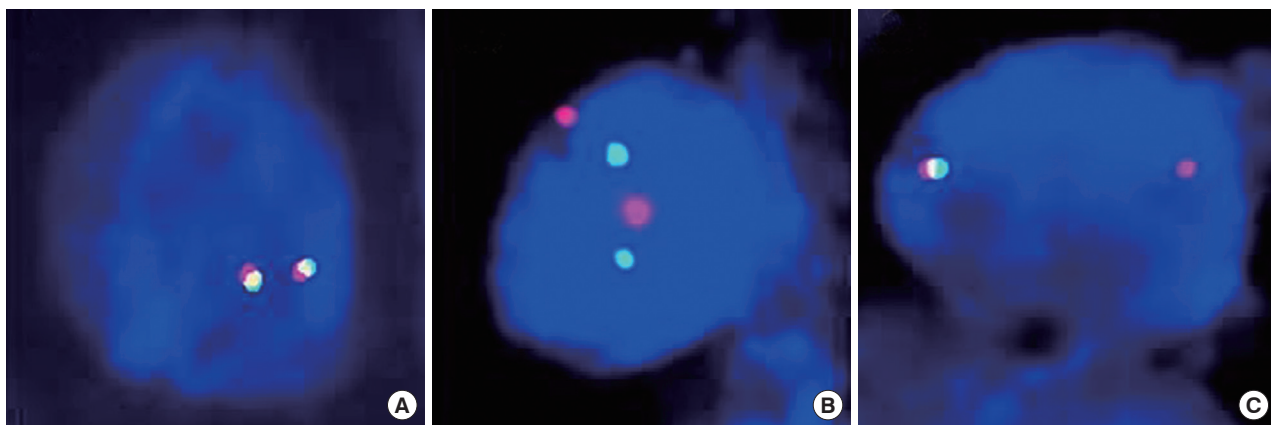


Fig. 1. Break-apart fluorescence *in situ* hybridization (FISH) patterns. Representative FISH images of anaplastic lymphoma kinase (*ALK*)-negative (A) and *ALK*-rearranged tumors (B, C) are demonstrated. Tumors are considered *ALK*-positive when green and red signals are separated by at least two signal diameters (B) or a single red signal without a corresponding green signal, in addition to fused and/or break-apart signals (C).

ies (ALK1, 5A4, and D5F3) that have been studied in depth for NSCLC. D5F3 and 5A4 appeared to be both more sensitive and more specific than the ALK1 antibody.³⁵⁻³⁸ For a detection system, there are various systems with a substantial degree of signal amplification (Leica/Novocastra Novolink, Dako Advance, Tyramide, Envision+, Ventana i-view). Using highly sensitive detection methods in combination with high affinity antibodies, IHC can effectively detect ALK fusion protein with high sensitivity and specificity. However, so far, there is no qualified guideline for the selection of primary antibodies or the detection system.

There are still several considerations regarding the use of ALK IHC as a screening method for *ALK* rearrangement. First of all, there is no accepted standard criterion for IHC interpretation. IHC scoring has been proposed by several publications, including a representatively binary system (positive/negative)^{9,37,39,40} and a scoring system in the range of 0 to 3 by signal intensity and percentage (Fig. 2).^{11,35,36,38,41-44} As a screening tool, IHC score is an important criterion for the selection of patients

for *ALK* FISH testing or crizotinib therapy. Paik *et al.*¹¹ showed good correlations between IHC score and FISH results: cases assigned an ALK IHC score of 3 showed FISH-positivity, while ALK IHC scores of 0 and 1 showed FISH-negativity. However, there are arguments that a four-tiered scoring system creates higher inter-observer variability, so a binary system is more than clear cut for the selection of *ALK*-positive patients.⁴⁴ Thus, we recommend that tumors that are positive for ALK IHC, either weakly or strongly, should still be referred to FISH analysis for confirmation of a rearrangement, regardless of primary antibody or detection system.

Another consideration is the lack of clinical validation for crizotinib treatment in ALK IHC positive and FISH negative cases. Although there was a report that showed a FISH negative, IHC positive patient who showed better response to crizotinib,⁴⁵ this single instance is insufficient to develop a specific recommendation regarding the use of ALK IHC as a sole determinant of ALK TKI therapy.

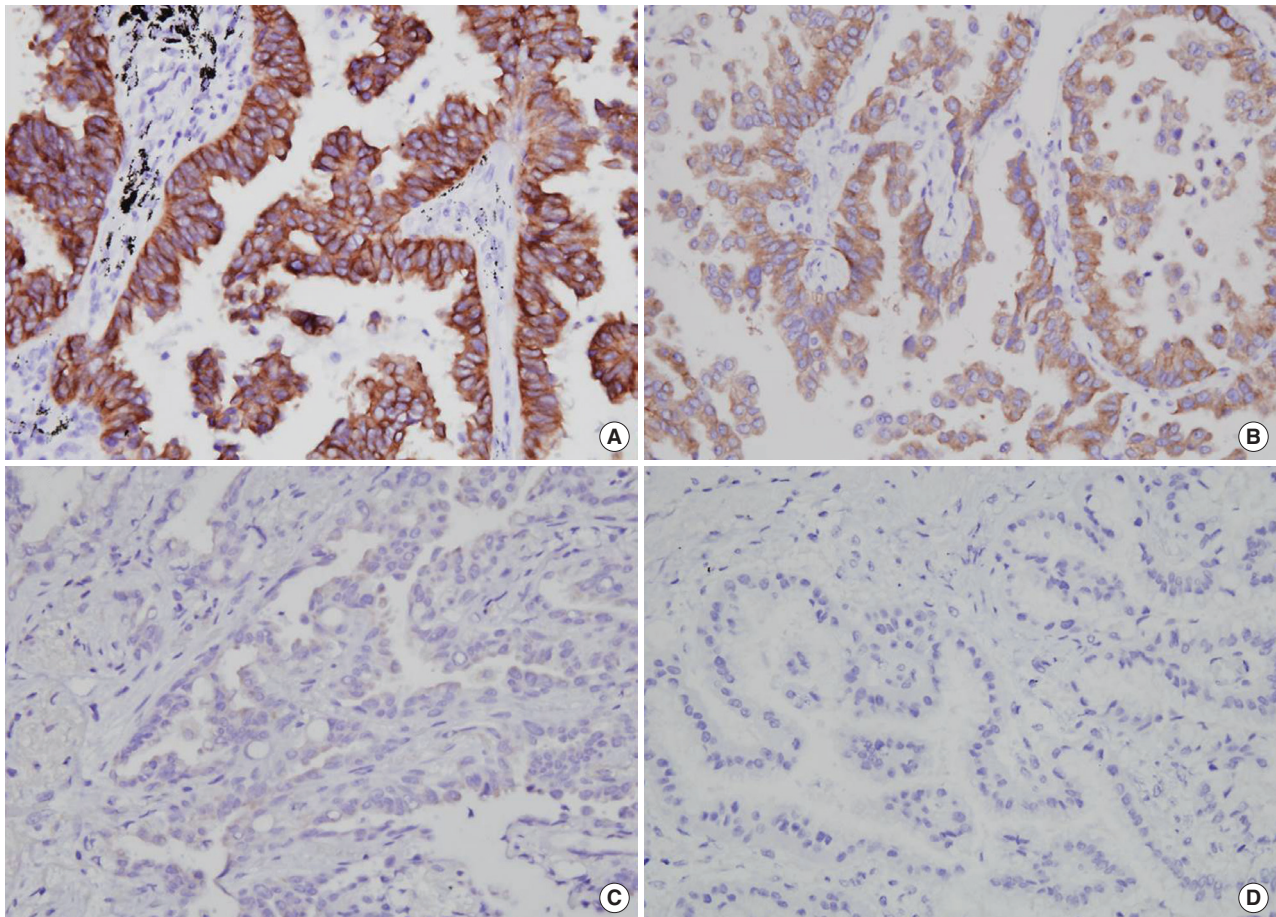


Fig. 2. Anaplastic lymphoma kinase protein expression by immunohistochemistry with a 0-3 intensity-based scoring system. Representative images of score 3 (A), 2 (B), 1 (C), and 0 (D) are displayed.

If the IHC method is eventually proven to be accurate in detecting *ALK* rearrangements and variability, and interpretation can be standardized, IHC assays hold the potential to facilitate the routine identification of *ALK*-rearranged lung adenocarcinoma. Many studies have investigated and reported the high concordance between IHC and FISH results.^{11,35,39-44,46,47} The CAP-IASLC-AMP guideline also recommends that a properly validated IHC method be used as a screening modality, and that tumors that fail to demonstrate *ALK* immunoreactivity with a sensitive IHC method need not be tested for *ALK* rearrangement by FISH.¹⁷

Reverse transcriptase-polymerase chain reaction

ALK rearrangement generates a unique sequence and the PCR primer that hybridizes with the fusion transcript is responsible for the high sensitivity of the RT-PCR test.⁴⁸⁻⁵⁰ However, RT-PCR requires *ALK* fusion variants to be known so that primers to all variants should be included in the reaction.⁵¹⁻⁵³ Although, despite an ever-expanding list of *ALK* fusion variants, all the reported variants require skillful application. In addition, the majority of current *ALK* fusion variants were detected by RT-PCR

in fresh frozen tumor tissue. However, in daily clinical practice, most of the tumor tissues available for molecular profiling are FFPE samples,⁵³ where the integrity of RNAs is likely to be greatly compromised compared with fresh frozen tissue. Thus, at the present time, RT-PCR is not recommended as a first-line diagnostic method for determining *ALK* fusion status.

DIAGNOSTIC ALGORITHM

Based on the advantages and characteristics of individual methods for detecting *ALK* gene status, several investigator groups have proposed diagnostic algorithms for *ALK* testing.^{11,18,36,54,55} Considering the trends that the histological types are usually determined by only small biopsy materials or cytological specimens in advanced NSCLC patients, we recommend that *ALK* rearrangement testing should be done simultaneously with *EGFR/K-ras* mutation testing for eligible patients (Fig. 3). We also propose that validated IHC can be used as a screening method to detect the *ALK* rearrangement and *ALK* FISH can be a confirmative method for all cases showing positive *ALK* IHC results. If the consensus between pathologists and institu-

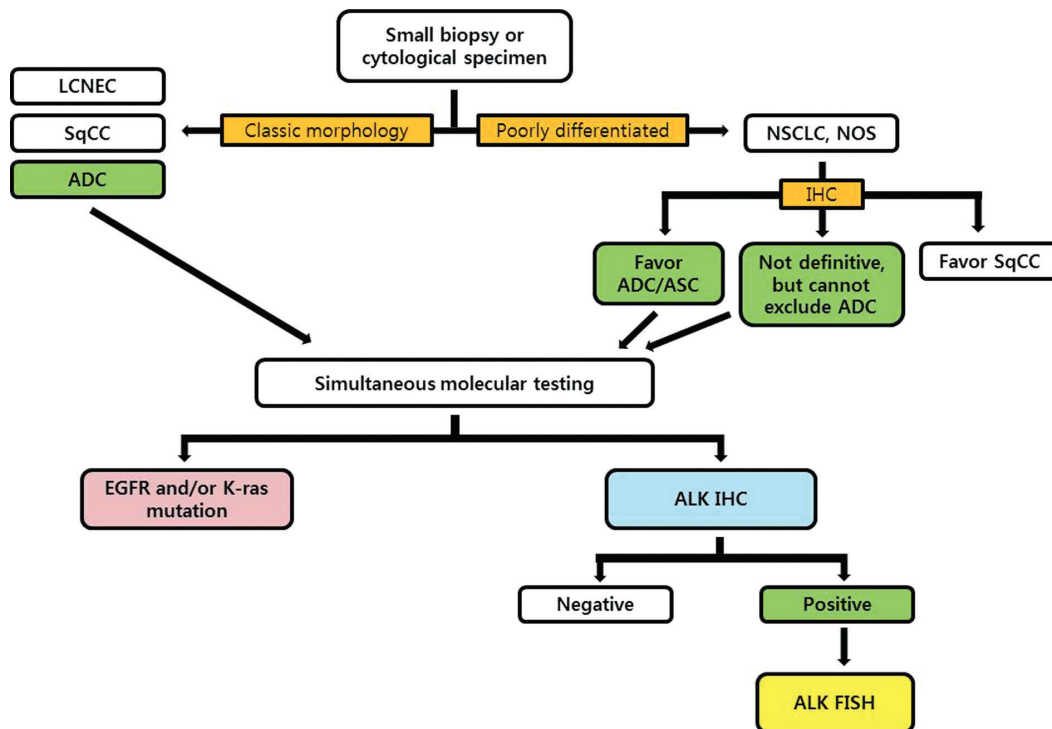


Fig. 3. Diagnostic algorithm for molecular testing of small biopsy or cytological specimens in non-small cell lung cancer patients. LCNEC, large cell neuroendocrine carcinoma; SqCC, squamous cell carcinoma; ADC, adenocarcinoma; NSCLC, non-small cell lung carcinoma; NOS, not otherwise specified; ASC, adenosquamous carcinoma; IHC, immunohistochemistry; EGFR, epidermal growth factor receptor; ALK, anaplastic lymphoma kinase; FISH, fluorescence *in situ* hybridization.

tional clinicians can be established, 'reflex molecular testing' is recommended to minimize the exhaustion of small biopsy tissue samples for the necessary molecular tests, and to provide a rapid determination of the genetic characteristics of NSCLC patients.

REPORTING THE RESULTS

Molecular testing reports should contain the following information: 1) identification of the patient including pathologic number, age, sex, hospital unit number, and requesting physician/department, 2) material used for the analysis including biopsy site and sample source, 3) methodology used for analysis and the type of commercial test used, and 4) test results, expressed in terms of negativity or positivity for the rearrangement of the *ALK* gene. We recommend reporting the following details: total number of counted nuclei, percentage of the nuclei showing gene rearrangements (break-apart and isolated red signal), as well as atypical pattern (e.g., isolated green signal), and copy number gain if observed, 5) receipt day and report day, 6) comments, and 7) names of testing technician and corresponding pathologist.

PROPOSAL FOR AN EXTERNAL QUALITY ASSESSMENT PROGRAM

For optimal ALK testing in NSCLC, the quality of the sample, validation status of the analytical procedure, and reliable reporting of the test results are crucial. There are several accessible external quality assessment (EQA) programs for the quality assessment of molecular testing (e.g., <http://lung.eqascheme.org>; <http://kras.eqascheme.org>; <http://www.ukneqas.org.uk>; <http://www.emqn.org/emqn/schemes>; <http://www.quip-ringversuche.de>). At this time, no external quality control program for ALK testing exists. To improve the reliability of assays for detecting *ALK* positivity, as well as optimal information regarding patient selection for ALK inhibitors, further studies should be performed to compare and validate these different diagnostic assays. Quality control programs used in HER-2 testing in Spain, the United Kingdom, and Scandinavia would be a good role model.³³

CONCLUSION: ROLE OF PATHOLOGISTS AND FUTURE PERSPECTIVES

Molecular testing for targetable mutation has emerged as the standard of care in the management of patients with lung ade-

nocarcinoma. Standardization and optimization of diagnostic molecular testing methods using clinical samples have become increasingly important. However, because most lung cancer patients present with an advanced tumor stage at the time of diagnosis, the diagnosis of lung cancer is often based on small specimens from a biopsy or cytology alone. Therefore, it is important that the pathologists handle specimens carefully for further molecular profiling, including EGFR and ALK tests, and do their best to obtain rapid and accurate determination of the patients who are candidates for targeted therapy. Each pathology department must fully validate the detection methods and develop a strategy to manage clinical samples and closely collaborate with clinicians. As a professional group, pathologists should take the lead in determining laboratory references, based on a balance between patient care and resource availability.

Conflicts of Interest

No potential conflict of interest relevant to this article was reported.

REFERENCES

1. Jemal A, Bray F, Center MM, Ferlay J, Ward E, Forman D. Global cancer statistics. *CA Cancer J Clin* 2011; 61: 69-90.
2. Lynch TJ, Bell DW, Sordella R, *et al*. Activating mutations in the epidermal growth factor receptor underlying responsiveness of non-small-cell lung cancer to gefitinib. *N Engl J Med* 2004; 350: 2129-39.
3. Paez JG, Jänne PA, Lee JC, *et al*. *EGFR* mutations in lung cancer: correlation with clinical response to gefitinib therapy. *Science* 2004; 304: 1497-500.
4. Pao W, Miller V, Zakowski M, *et al*. EGF receptor gene mutations are common in lung cancers from "never smokers" and are associated with sensitivity of tumors to gefitinib and erlotinib. *Proc Natl Acad Sci U S A* 2004; 101: 13306-11.
5. Soda M, Choi YL, Enomoto M, *et al*. Identification of the transforming *EML4-ALK* fusion gene in non-small-cell lung cancer. *Nature* 2007; 448: 561-6.
6. Kwak EL, Bang YJ, Camidge DR, *et al*. Anaplastic lymphoma kinase inhibition in non-small-cell lung cancer. *N Engl J Med* 2010; 363: 1693-703.
7. Shaw AT, Yeap BY, Solomon BJ, *et al*. Effect of crizotinib on overall survival in patients with advanced non-small-cell lung cancer harbouring *ALK* gene rearrangement: a retrospective analysis. *Lancet Oncol* 2011; 12: 1004-12.
8. Koivunen JP, Mermel C, Zejnullahu K, *et al*. *EML4-ALK* fusion

- gene and efficacy of an ALK kinase inhibitor in lung cancer. *Clin Cancer Res* 2008; 14: 4275-83.
9. Boland JM, Erdogan S, Vasmataz G, *et al.* Anaplastic lymphoma kinase immunoreactivity correlates with *ALK* gene rearrangement and transcriptional up-regulation in non-small cell lung carcinomas. *Hum Pathol* 2009; 40: 1152-8.
 10. Inamura K, Takeuchi K, Togashi Y, *et al.* *EML4-ALK* fusion is linked to histological characteristics in a subset of lung cancers. *J Thorac Oncol* 2008; 3: 13-7.
 11. Paik JH, Choe G, Kim H, *et al.* Screening of anaplastic lymphoma kinase rearrangement by immunohistochemistry in non-small cell lung cancer: correlation with fluorescence *in situ* hybridization. *J Thorac Oncol* 2011; 6: 466-72.
 12. Rodig SJ, Mino-Kenudson M, Dacic S, *et al.* Unique clinicopathologic features characterize *ALK*-rearranged lung adenocarcinoma in the western population. *Clin Cancer Res* 2009; 15: 5216-23.
 13. Shaw AT, Yeap BY, Mino-Kenudson M, *et al.* Clinical features and outcome of patients with non-small-cell lung cancer who harbor *EML4-ALK*. *J Clin Oncol* 2009; 27: 4247-53.
 14. Inamura K, Takeuchi K, Togashi Y, *et al.* *EML4-ALK* lung cancers are characterized by rare other mutations, a TTF-1 cell lineage, an acinar histology, and young onset. *Mod Pathol* 2009; 22: 508-15.
 15. Sun Y, Ren Y, Fang Z, *et al.* Lung adenocarcinoma from East Asian never-smokers is a disease largely defined by targetable oncogenic mutant kinases. *J Clin Oncol* 2010; 28: 4616-20.
 16. Kim H, Park E, Kim YJ, Chung JH. *ALK* rearrangement in a pure squamous cell carcinoma: the challenge of detection of *ALK* rearrangement. *Virchows Arch* 2013; 462: 597-9.
 17. Lindeman NI, Cagle PT, Beasley MB, *et al.* Molecular testing guideline for selection of lung cancer patients for EGFR and ALK tyrosine kinase inhibitors: guideline from the College of American Pathologists, International Association for the Study of Lung Cancer, and Association for Molecular Pathology. *J Thorac Oncol* 2013; 8: 823-59.
 18. Marchetti A, Arziconi A, Papotti M, *et al.* Recommendations for the analysis of *ALK* gene rearrangements in non-small-cell lung cancer: a consensus of the Italian Association of Medical Oncology and the Italian Society of Pathology and Cytopathology. *J Thorac Oncol* 2013; 8: 352-8.
 19. Travis WD, Brambilla E, Noguchi M, *et al.* International Association for the Study of Lung Cancer/American Thoracic Society/European Respiratory Society international multidisciplinary classification of lung adenocarcinoma. *J Thorac Oncol* 2011; 6: 244-85.
 20. Rekhtman N, Ang DC, Sima CS, Travis WD, Moreira AL. Immunohistochemical algorithm for differentiation of lung adenocarcinoma and squamous cell carcinoma based on large series of whole-tissue sections with validation in small specimens. *Mod Pathol* 2011; 24: 1348-59.
 21. Kargi A, Gurel D, Tuna B. The diagnostic value of TTF-1, CK 5/6, and p63 immunostaining in classification of lung carcinomas. *Appl Immunohistochem Mol Morphol* 2007; 15: 415-20.
 22. Wu M, Wang B, Gil J, *et al.* p63 and TTF-1 immunostaining: a useful marker panel for distinguishing small cell carcinoma of lung from poorly differentiated squamous cell carcinoma of lung. *Am J Clin Pathol* 2003; 119: 696-702.
 23. Rossi G, Pelosi G, Graziano P, Barbareschi M, Papotti M. A reevaluation of the clinical significance of histological subtyping of non-small-cell lung carcinoma: diagnostic algorithms in the era of personalized treatments. *Int J Surg Pathol* 2009; 17: 206-18.
 24. Rossi G, Papotti M, Barbareschi M, Graziano P, Pelosi G. Morphology and a limited number of immunohistochemical markers may efficiently subtype non-small-cell lung cancer. *J Clin Oncol* 2009; 27: e141-2.
 25. Betz BL, Dixon CA, Weigelin HC, Knoepp SM, Roh MH. The use of stained cytologic direct smears for *ALK* gene rearrangement analysis of lung adenocarcinoma. *Cancer Cytopathol* 2013; 121: 489-99.
 26. Savic S, Bode B, Diebold J, *et al.* Detection of *ALK*-positive non-small-cell lung cancers on cytological specimens: high accuracy of immunocytochemistry with the 5A4 clone. *J Thorac Oncol* 2013; 8: 1004-11.
 27. Neat MJ, Foot NJ, Hicks A, *et al.* *ALK* rearrangements in EBUS-derived transbronchial needle aspiration cytology in lung cancer. *Cytopathology* 2013; 24: 356-64.
 28. Tanaka H, Tone K, Hayashi A, *et al.* Clinical application of immunocytochemical detection of *ALK* rearrangement on cytology slides for detection or screening of lung adenocarcinoma. *Lung Cancer* 2013; 80: 289-92.
 29. Kim H, Xu X, Yoo SB, *et al.* Discordance between anaplastic lymphoma kinase status in primary non-small-cell lung cancers and their corresponding metastases. *Histopathology* 2013; 62: 305-14.
 30. Boldrini L, Gisfredi S, Ursino S, *et al.* Mutational analysis in cytological specimens of advanced lung adenocarcinoma: a sensitive method for molecular diagnosis. *J Thorac Oncol* 2007; 2: 1086-90.
 31. Pirker R, Herth FJ, Kerr KM, *et al.* Consensus for *EGFR* mutation testing in non-small cell lung cancer: results from a European workshop. *J Thorac Oncol* 2010; 5: 1706-13.
 32. Eberhard DA, Giaccone G, Johnson BE; Non-Small-Cell Lung Cancer Working Group. Biomarkers of response to epidermal growth factor receptor inhibitors in Non-Small-Cell Lung Cancer Working Group: standardization for use in the clinical trial setting. *J Clin Oncol* 2008; 26: 983-94.
 33. Garrido P, de Castro J, Concha Á, *et al.* Guidelines for biomarker

- testing in advanced non-small-cell lung cancer. A national consensus of the Spanish Society of Medical Oncology (SEOM) and the Spanish Society of Pathology (SEAP). *Clin Transl Oncol* 2012; 14: 338-49.
34. Camidge DR, Kono SA, Flacco A, *et al.* Optimizing the detection of lung cancer patients harboring anaplastic lymphoma kinase (*ALK*) gene rearrangements potentially suitable for *ALK* inhibitor treatment. *Clin Cancer Res* 2010; 16: 5581-90.
 35. Mino-Kenudson M, Chirieac LR, Law K, *et al.* A novel, highly sensitive antibody allows for the routine detection of *ALK*-rearranged lung adenocarcinomas by standard immunohistochemistry. *Clin Cancer Res* 2010; 16: 1561-71.
 36. Conklin CM, Craddock KJ, Have C, Laskin J, Couture C, Ionescu DN. Immunohistochemistry is a reliable screening tool for identification of *ALK* rearrangement in non-small-cell lung carcinoma and is antibody dependent. *J Thorac Oncol* 2013; 8: 45-51.
 37. Minca EC, Portier BP, Wang Z, *et al.* *ALK* status testing in non-small cell lung carcinoma: correlation between ultrasensitive IHC and FISH. *J Mol Diagn* 2013; 15: 341-6.
 38. Selinger CI, Rogers TM, Russell PA, *et al.* Testing for *ALK* rearrangement in lung adenocarcinoma: a multicenter comparison of immunohistochemistry and fluorescent *in situ* hybridization. *Mod Pathol* 2013; 26: 1545-53.
 39. Hofman P, Ilie M, Hofman V, *et al.* Immunohistochemistry to identify *EGFR* mutations or *ALK* rearrangements in patients with lung adenocarcinoma. *Ann Oncol* 2012; 23: 1738-43.
 40. Martinez P, Hernández-Losa J, Montero MÁ, *et al.* Fluorescence *in situ* hybridization and immunohistochemistry as diagnostic methods for *ALK* positive non-small cell lung cancer patients. *PLoS One* 2013; 8: e52261.
 41. Yi ES, Boland JM, Maleszewski JJ, *et al.* Correlation of IHC and FISH for *ALK* gene rearrangement in non-small cell lung carcinoma: IHC score algorithm for FISH. *J Thorac Oncol* 2011; 6: 459-65.
 42. McLeer-Florin A, Moro-Sibilot D, Melis A, *et al.* Dual IHC and FISH testing for *ALK* gene rearrangement in lung adenocarcinomas in a routine practice: a French study. *J Thorac Oncol* 2012; 7: 348-54.
 43. Wang Z, Zhang X, Bai H, *et al.* *EML4-ALK* rearrangement and its clinical significance in Chinese patients with advanced non-small cell lung cancer. *Oncology* 2012; 83: 248-56.
 44. Ying J, Guo L, Qiu T, *et al.* Diagnostic value of a novel fully automated immunochemistry assay for detection of *ALK* rearrangement in primary lung adenocarcinoma. *Ann Oncol* 2013; 24: 2589-93.
 45. Sun JM, Choi YL, Won JK, *et al.* A dramatic response to crizotinib in a non-small-cell lung cancer patient with IHC-positive and FISH-negative *ALK*. *J Thorac Oncol* 2012; 7: e36-8.
 46. Jokoji R, Yamasaki T, Minami S, *et al.* Combination of morphological feature analysis and immunohistochemistry is useful for screening of *EML4-ALK*-positive lung adenocarcinoma. *J Clin Pathol* 2010; 63: 1066-70.
 47. Han XH, Zhang NN, Ma L, *et al.* Immunohistochemistry reliably detects *ALK* rearrangements in patients with advanced non-small-cell lung cancer. *Virchows Arch* 2013; 463: 583-91.
 48. Takeuchi K, Choi YL, Soda M, *et al.* Multiplex reverse transcription-PCR screening for *EML4-ALK* fusion transcripts. *Clin Cancer Res* 2008; 14: 6618-24.
 49. Sanders HR, Li HR, Bruey JM, *et al.* Exon scanning by reverse transcriptase-polymerase chain reaction for detection of known and novel *EML4-ALK* fusion variants in non-small cell lung cancer. *Cancer Genet* 2011; 204: 45-52.
 50. Wong DW, Leung EL, So KK, *et al.* The *EML4-ALK* fusion gene is involved in various histologic types of lung cancers from nonsmokers with wild-type *EGFR* and *KRAS*. *Cancer* 2009; 115: 1723-33.
 51. Horn L, Pao W. *EML4-ALK*: honing in on a new target in non-small-cell lung cancer. *J Clin Oncol* 2009; 27: 4232-5.
 52. Takeuchi K, Choi YL, Togashi Y, *et al.* *KIF5B-ALK*, a novel fusion oncoprotein identified by an immunohistochemistry-based diagnostic system for *ALK*-positive lung cancer. *Clin Cancer Res* 2009; 15: 3143-9.
 53. Togashi Y, Soda M, Sakata S, *et al.* *KLC1-ALK*: a novel fusion in lung cancer identified using a formalin-fixed paraffin-embedded tissue only. *PLoS One* 2012; 7: e31323.
 54. Kim H, Yoo SB, Choe JY, *et al.* Detection of *ALK* gene rearrangement in non-small cell lung cancer: a comparison of fluorescence *in situ* hybridization and chromogenic *in situ* hybridization with correlation of *ALK* protein expression. *J Thorac Oncol* 2011; 6: 1359-66.
 55. Thunnissen E, Bubendorf L, Dietel M, *et al.* *EML4-ALK* testing in non-small cell carcinomas of the lung: a review with recommendations. *Virchows Arch* 2012; 461: 245-57.